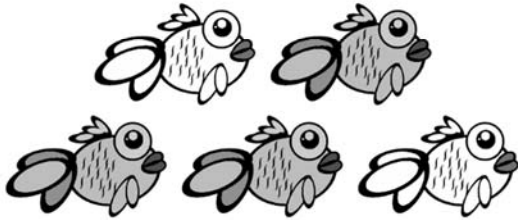
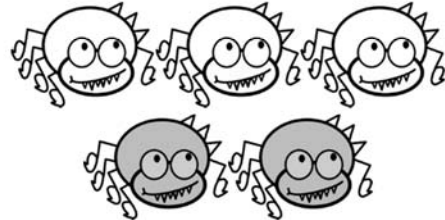


Fractions of a Group

A. Circle the fraction that represents the shaded part of each group.



$$\frac{2}{4} \quad \frac{3}{5} \quad \frac{4}{6}$$



$$\frac{2}{5} \quad \frac{3}{5} \quad \frac{4}{5}$$

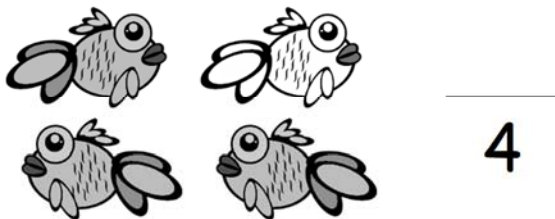


$$\frac{2}{4} \quad \frac{3}{5} \quad \frac{4}{6}$$

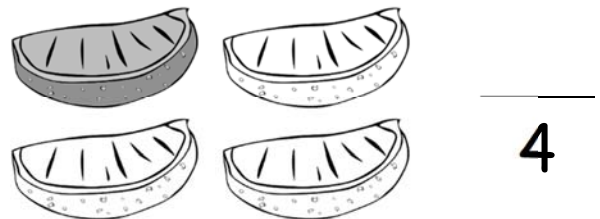


$$\frac{1}{3} \quad \frac{2}{3} \quad \frac{3}{3}$$

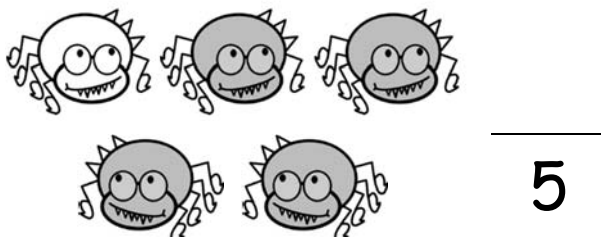
B. Write the fraction that represents the shaded part of each group.



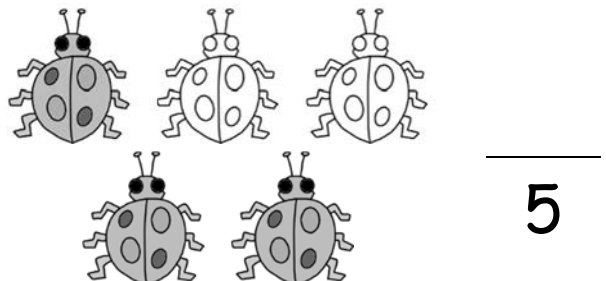
4



4



5



5