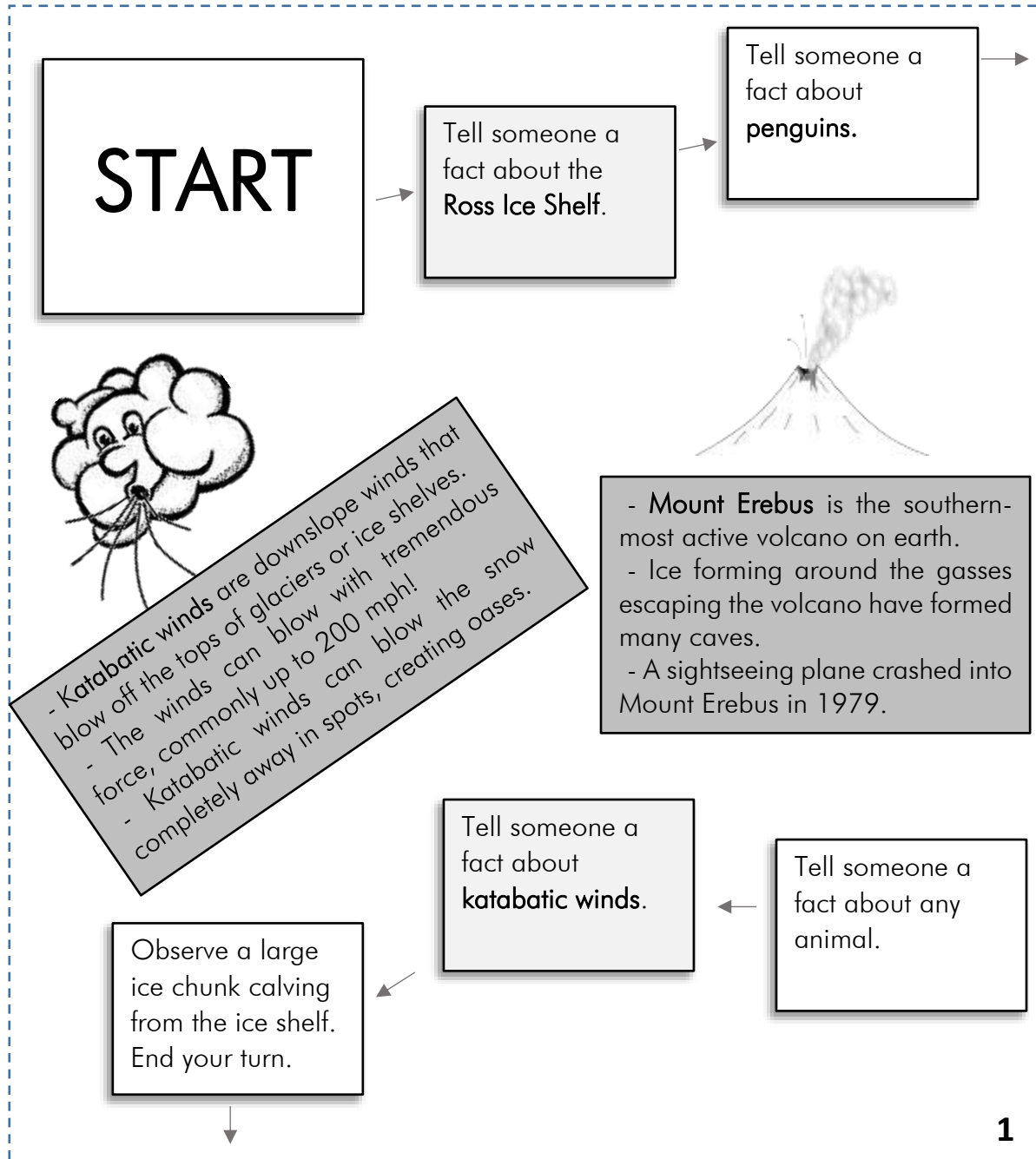
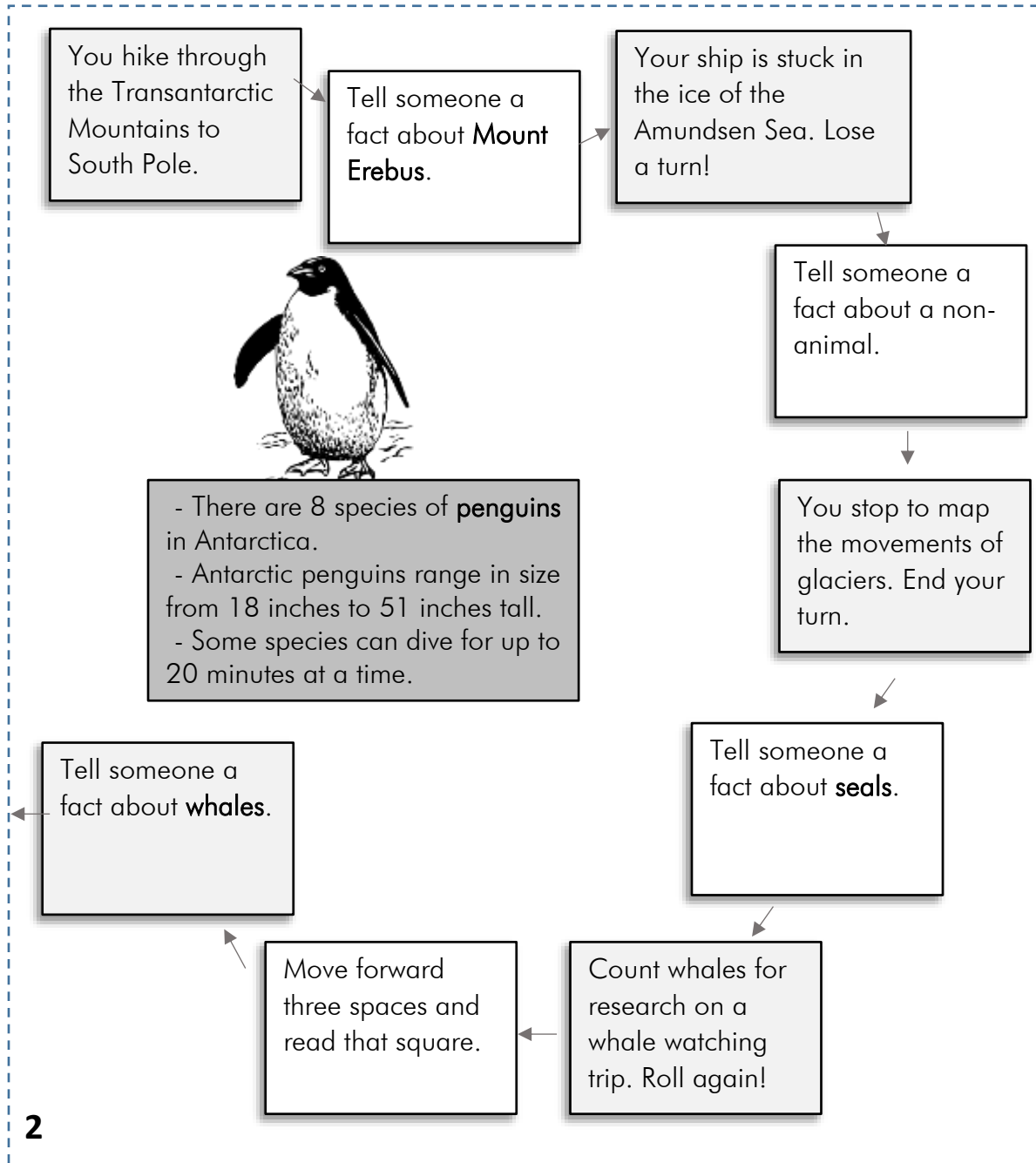
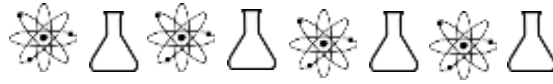
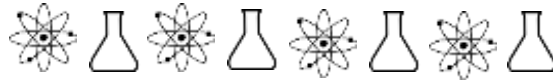


# Antarctic Expedition

Cut the pages on the dotted lines and place them in this pattern:  $\begin{matrix} 1 & 2 \\ 3 & 4 \end{matrix}$  Using a single six-sided die and whatever markers you can gather (coins, different rocks, pawns from other games, etc.), take turns rolling and moving the number on the die. Follow the directions on the square you land on. Requested facts can be found throughout the board. Can you get to the end and complete the expedition?





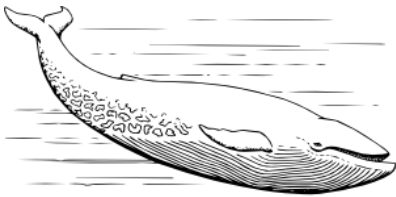


3

Tell someone a fact about the **Ross Ice Shelf**.

Tell someone a fact about a non-animal.

Tell someone a fact about **Mount Erebus**.



- Antarctic **whales** were hunted to near extinction in the 18<sup>th</sup> and 19<sup>th</sup> centuries.
- Whaling continued until 2019.
- Killer whales, which are technically dolphins, can live up to 80 years.

- **Seals** were also nearly extinct before sealing ended in 1972.
- Leopard seals are solitary animals, while elephant seals bunch together in wallows.
- Weddell seals can stay under water for 80 minutes.

**FINISH**

Recite three things you've learned and your expedition is a success!

Tell any fact that hasn't been told so far to avoid a blizzard!

Rough seas stop you in your tracks. End your turn.

