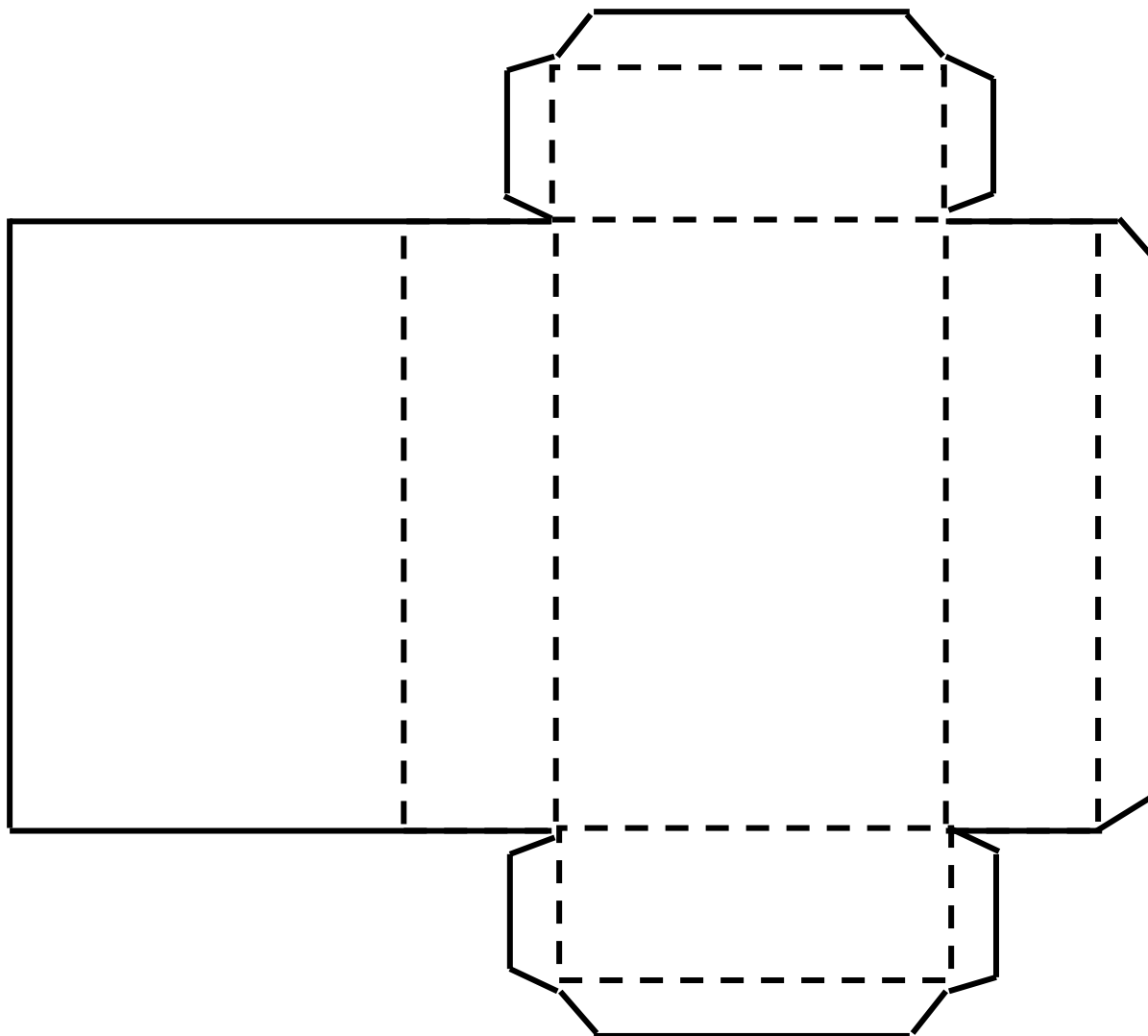
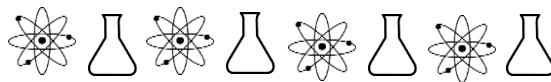


Mineral Crystals

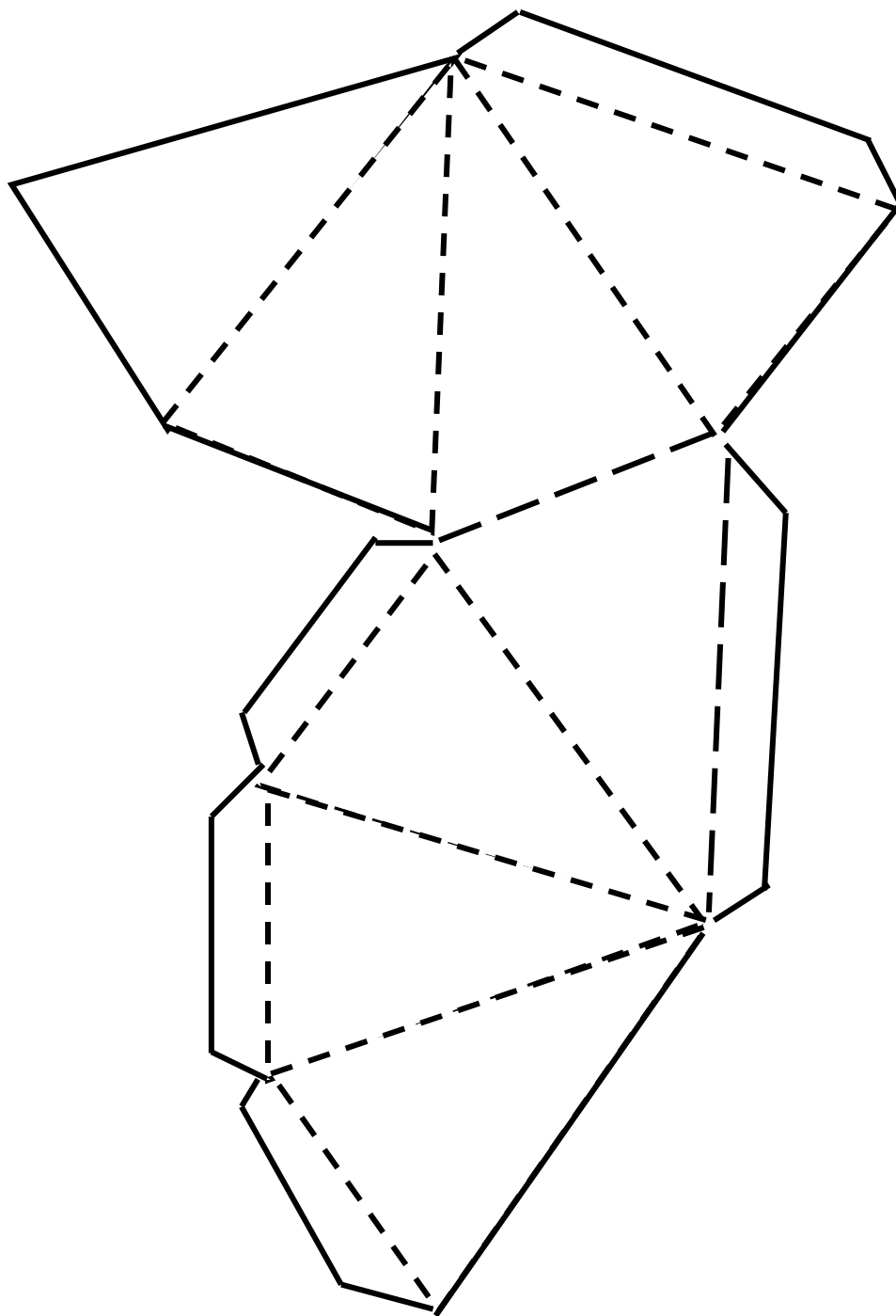
Cut on the solid lines, fold on the dotted lines. Assemble the various mineral crystal shapes. This is a rhombic prism. Minerals with this shape include topaz, sulfur, and barite.

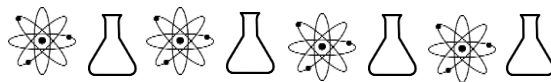




Mineral Crystals

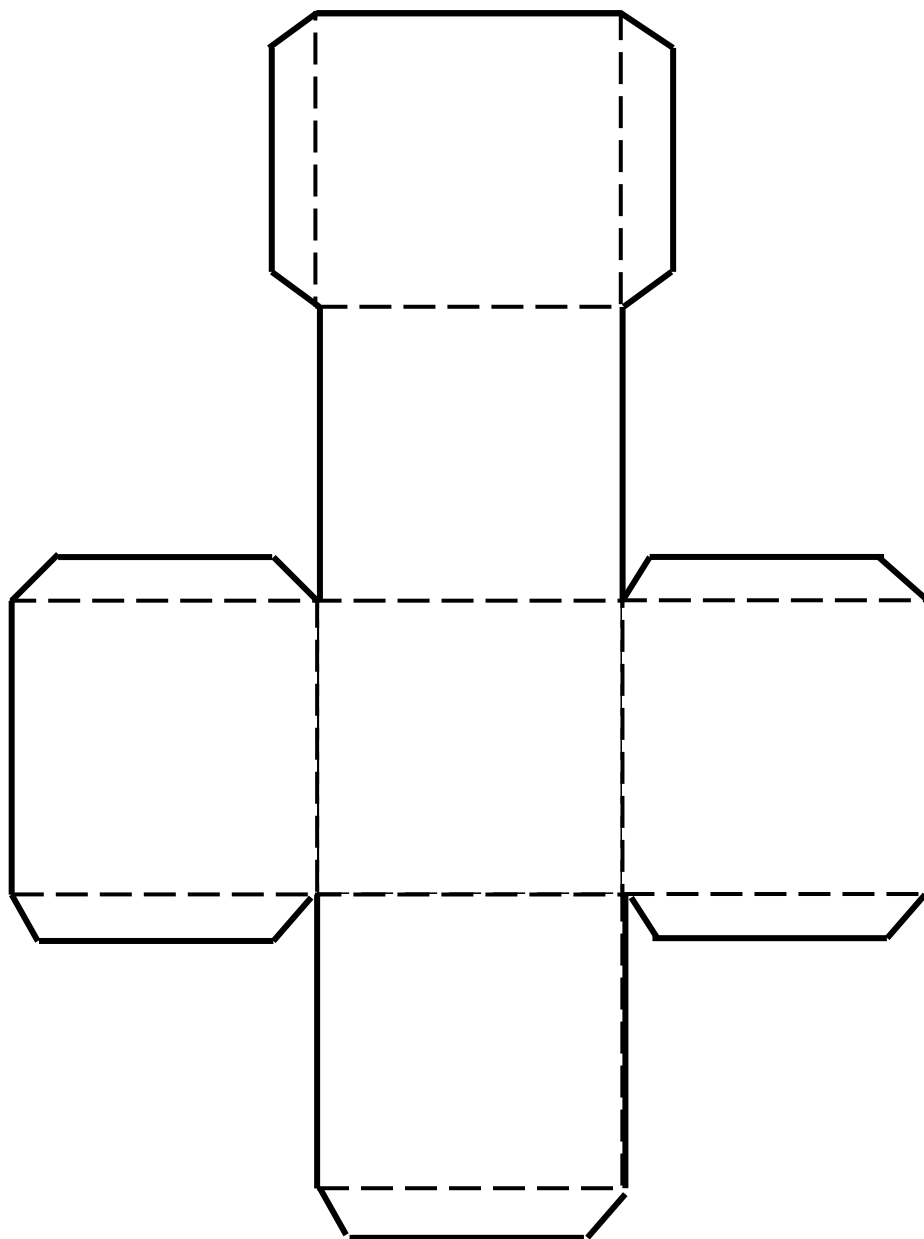
Cut on the solid lines, fold on the dotted lines. This is a tetragonal dipyramid.
Zircon is an example of a mineral with this shape.

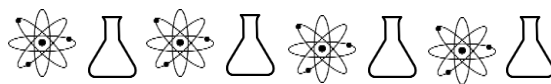




Mineral Crystals

Cut on the solid lines, fold on the dotted lines. This is a cube. Salt is a mineral with this shape.





Mineral Crystals

Cut around the outside of the entire shape, keeping the tabs attached. Fold on the dotted lines and use the tabs to glue the shape together. This is a hexagonal quartz.

