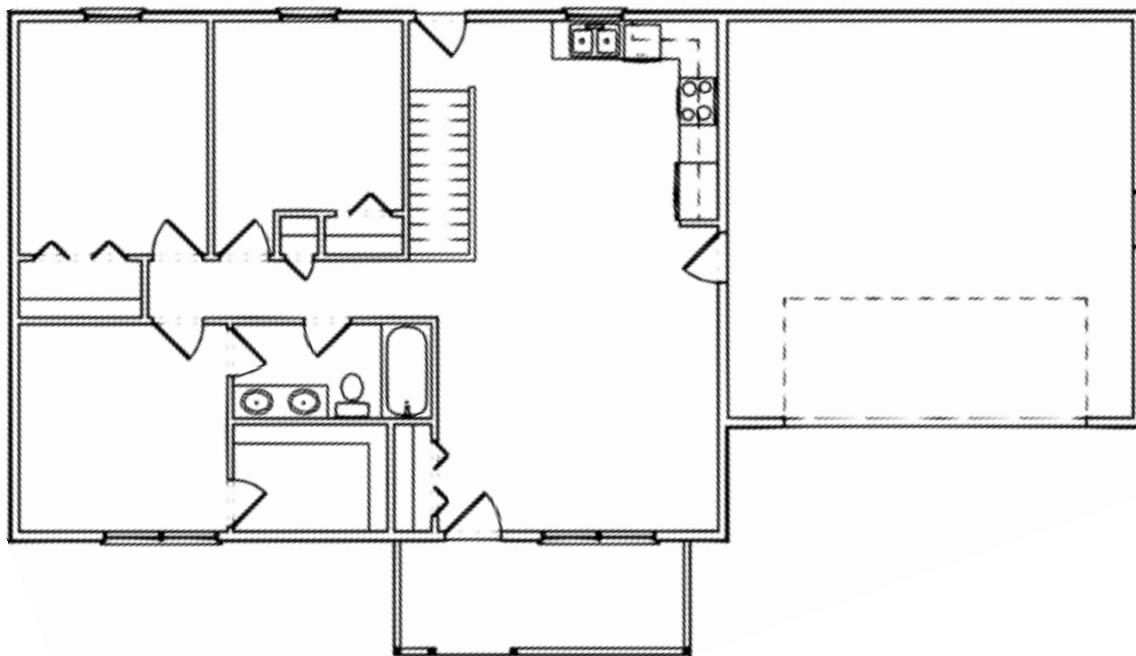




Floor Plan

Label the floor plan below according to the directions on the next page. Draw a compass rose if you want help with your directions.





The southern-most part of the house is the front porch. Label it **FRONT PORCH** and draw a plant on it. South of the front porch there is a path leading away from the house. Draw it.

Going north from the front porch, you enter a large room. The southern half of the room is the living room. Label it **LIVING ROOM** and add a sofa. The northern half of the room is the kitchen. Label it **KITCHEN**. Draw a pot on the stove.

The northwestern-most room in the home is the guest bedroom. Label it **GUEST BEDROOM** and draw a bed in the room. (In the southern part of the guest bedroom there is a small closet.)

Directly east of the guest bedroom is the library. This room is to the west of the kitchen. Label it **LIBRARY** and draw some books in it.

The room to the south of the guest bedroom is the master bedroom. Label it **MASTER BEDROOM**. Draw a bed in this room. East of this room there is a bathroom and a large closet. Label the **CLOSET** and draw a shirt in it.

The largest room of the floor plan is the garage. This family has turned it into a **GAME ROOM**. Label it and draw what you would want in your game room.

Heading north out the kitchen door is the **BACKYARD**. Label it and draw a tree in it.