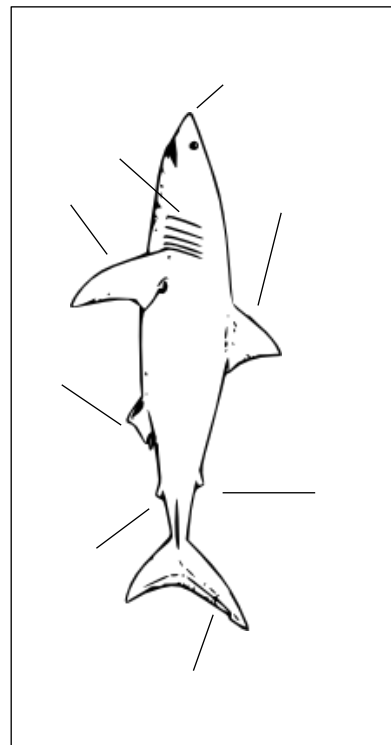
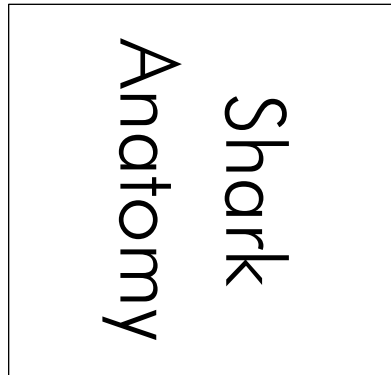
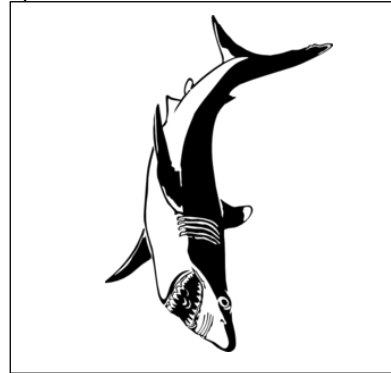
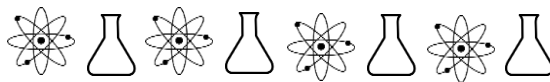


# Shark Anatomy

Label the shark. Cut out the labeled shark and glue into the middle rectangle of the piece on the left. Cut as one piece and fold the outside squares to cover the shark. Glue the label pieces on top of the folded piece.





# Shark Anatomy

Cut each piece out in full (don't cut off the tab label). Write information on each dotted piece, then cut and glue to a tabbed piece. Stack the pieces so the tabs are in order from left to right with the cover page on top.

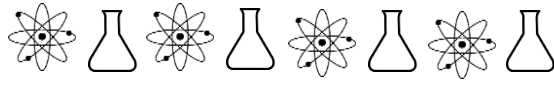
## Parts of a Shark

Denticles

1

Dorsal Fin

2

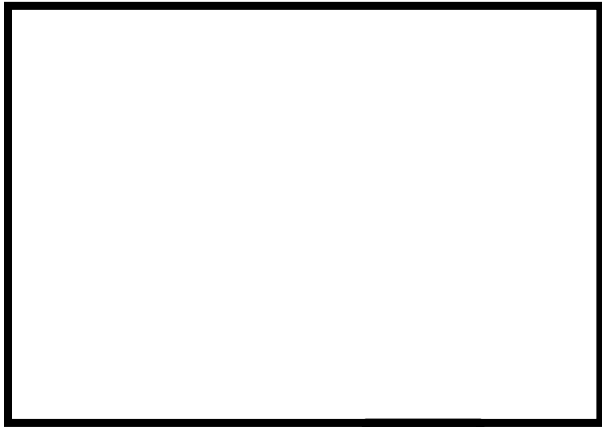


Pectoral Fin



3

Caudal Fin



4

Eyes



5