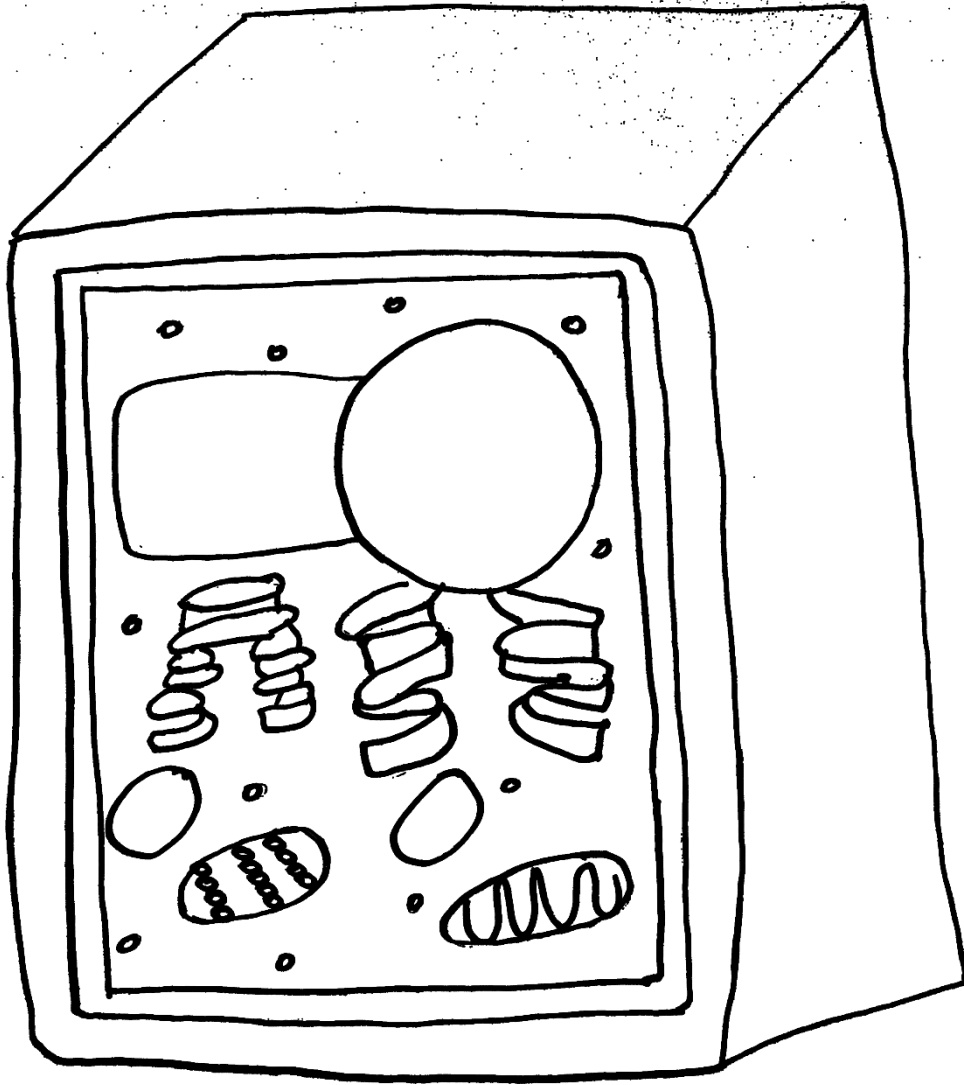




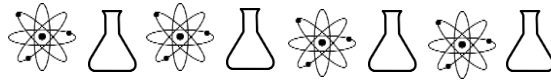
Plant Cell

Color the plant cell according to the key at the bottom.



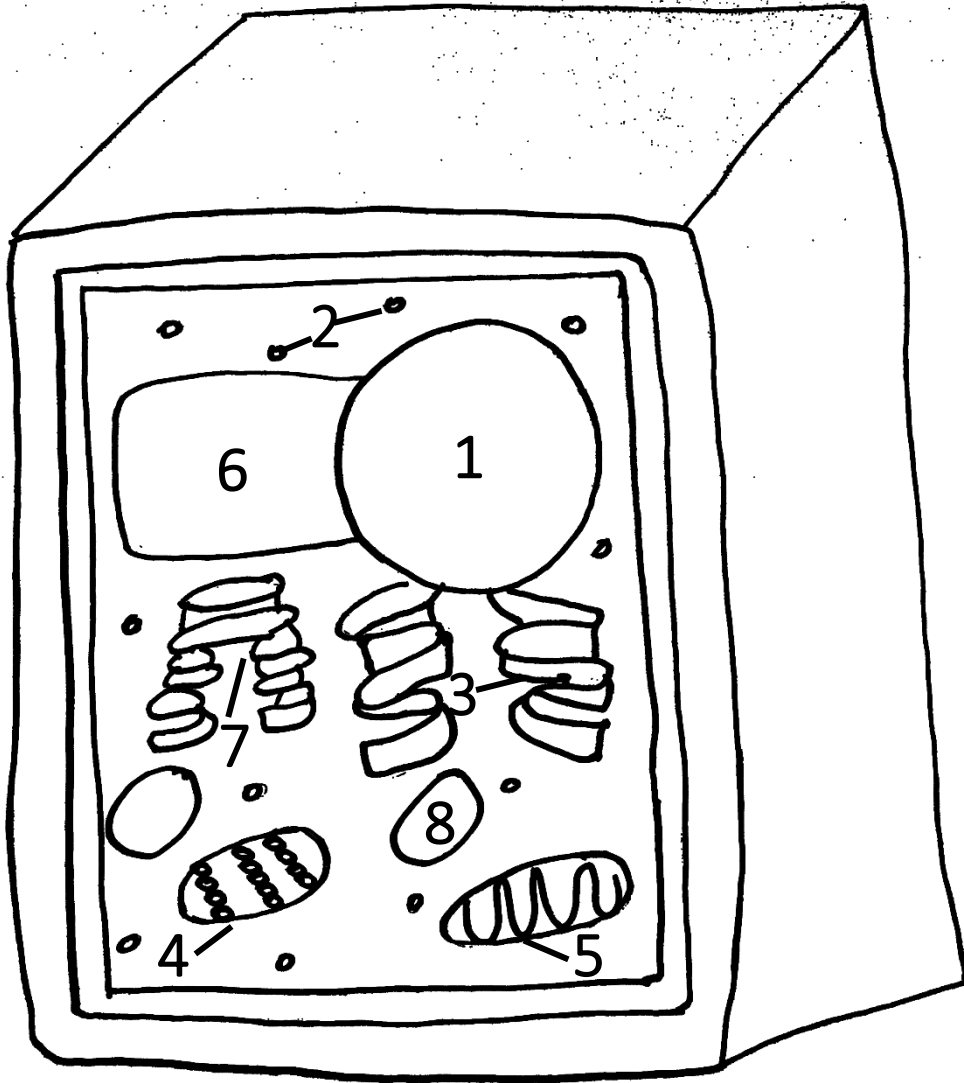
Nucleus – red
Ribosomes – orange
ER – brown
Chloroplast – green

Mitochondria - blue
Vacuole - purple
Golgi body - pink
Lysosome - yellow



Plant Cell

Color the animal cell according to the key at the bottom.



Nucleus – red (1)
Ribosomes – orange (2)
ER – brown (3)
Chloroplast – green (4)

Mitochondria – blue (5)
Vacuole – purple (6)
Golgi body – pink (7)
Lysosome – yellow (8)