

SPACE



How shapes are arranged in an art work creates a sense of space. Consider the possible ways shown below to create space.



Draw Big.



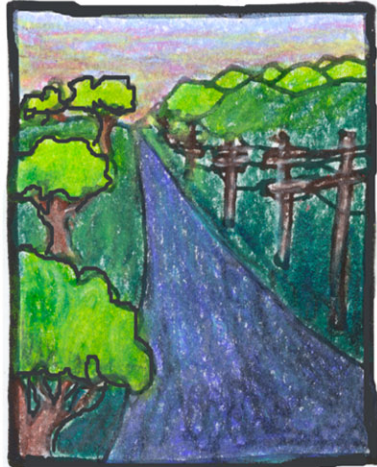
Fill the whole paper.



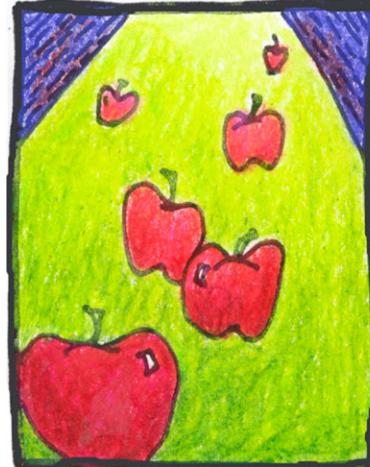
Extend lines off paper.



Placement in relation to horizon



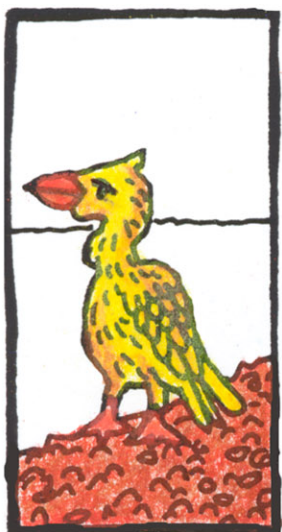
Smaller in distance
Larger closer up



Darker closer up
Lighter farther away



Overlapping



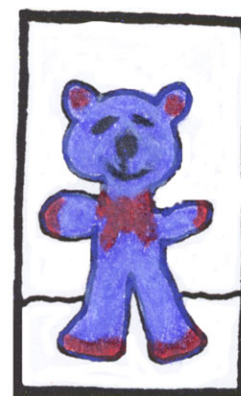
Foreground
(near space)



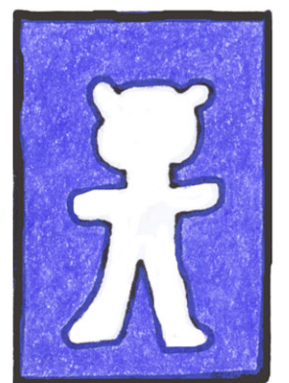
Midground
(middle space)



Background
(far space)



Positive Space
(the subject or objects in the work of art, not the space around them)



Negative Space
(The empty space around the subject or objects)

The ABCs of Art: The Elements & Principles of Design

Compiled, organized, and added to by ♥ M.C.Gillis

Contact artist, mo@expandingheart.com, to give feedback.

More downloads at www.expandingheart.com & www.awesomeartists.com.