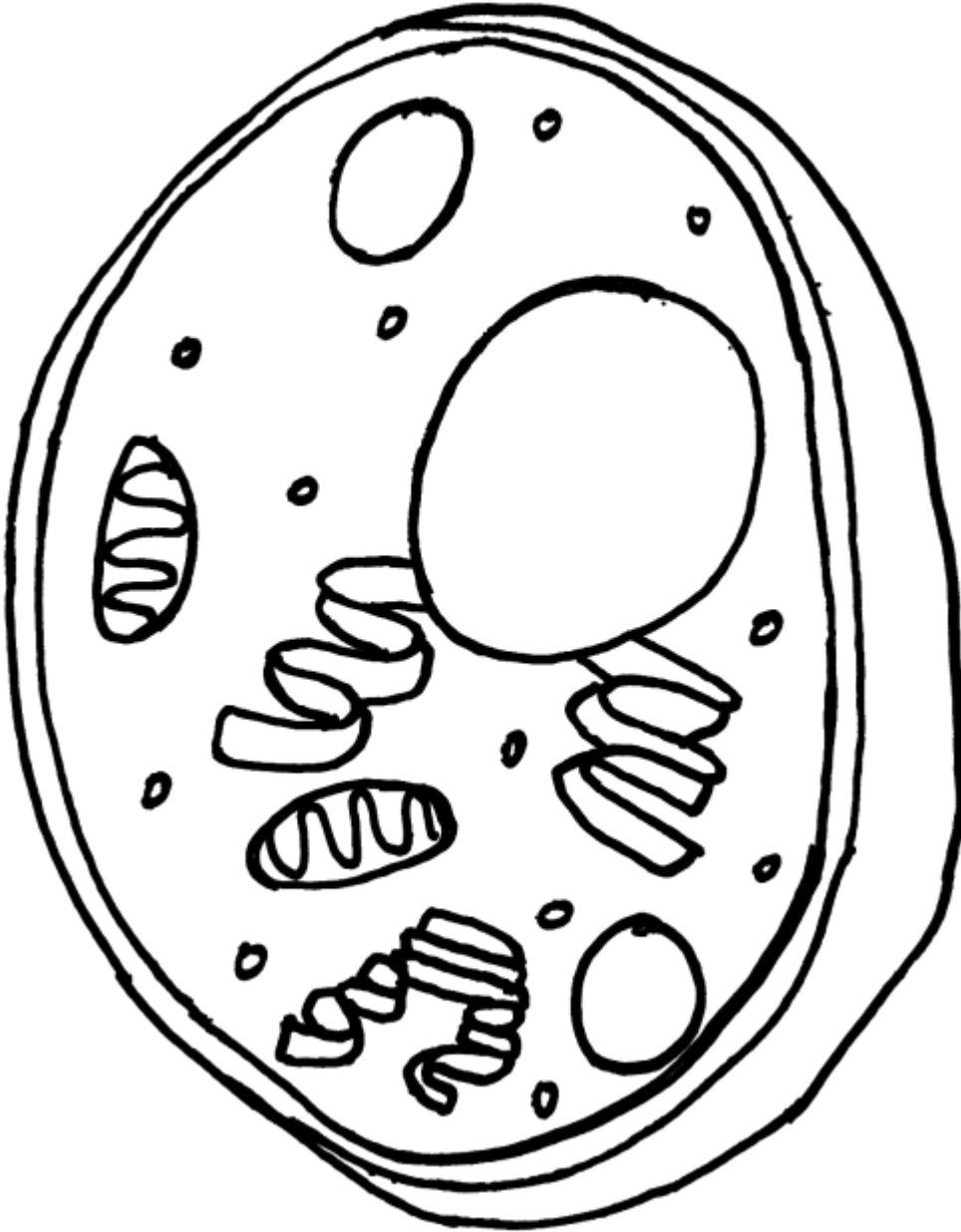


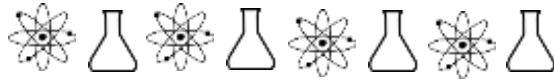
## Animal Cell

Color the animal cell according to the key at the bottom.



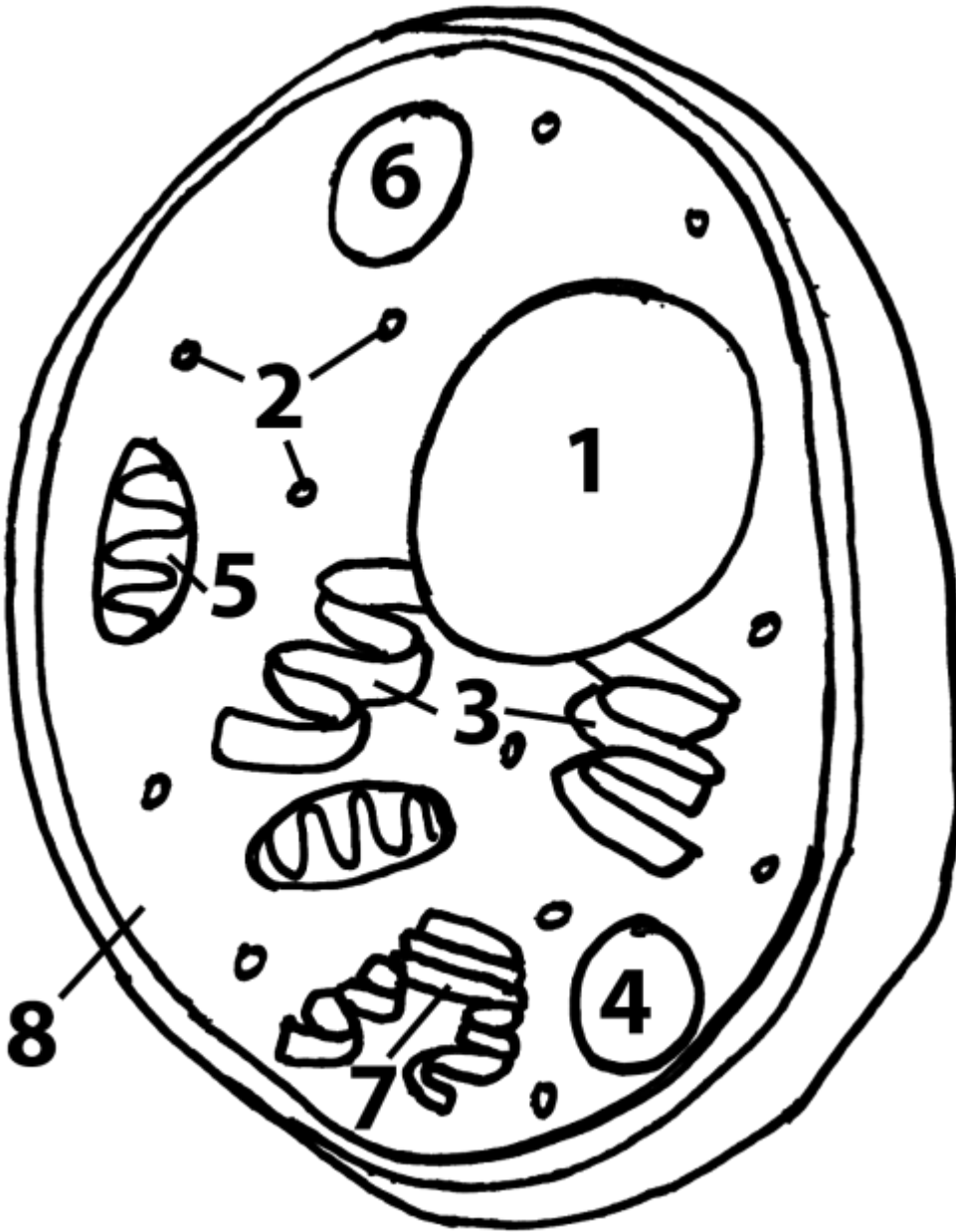
Nucleus – red  
Ribosomes – orange  
ER – brown  
Lysosome – green

Mitochondria - blue  
Vacuole - purple  
Golgi body - pink  
Cytoplasm - yellow



# Animal Cell

Color the animal cell according to the key at the bottom.



Nucleus – red (1)

Ribosomes – orange (2)

ER – brown (3)

Lysosome – green (4 or 6)

Mitochondria – blue (5)

Vacuole – purple (6 or 4)

Golgi body – pink (7)

Cytoplasm – yellow (8)